

Nanaimo Yacht Club is presenting the 29th year of SIN Camaraderie and Competition

Snake Island Nanaimo (SIN) Regatta
2022 SAILING INSTRUCTIONS

PHRF, Multihull and Cruiser-Racer divisions

Friday, July 1 to Sunday July 3, 2022

Version 1.0

The notation '[NP]' means that a breach of the rule will not be grounds for a protest by a boat. This changes RRS 60.1(a).

1. RULES

- 1.1. The regatta will be governed by the rules as defined in *The Racing Rules of Sailing* ("RRS").
- 1.2. PHRF-BC class rules will apply to all handicap keelboat divisions.
- 1.3. PHRFNW class rules will apply to the multihull division.
- 1.4. ORC Rating System rules will apply to all boats racing under an ORC Handicap to receive an ORC courtesy scoring result.
- 1.5. The Sail Canada prescriptions will apply and are appended to this Sailing Instructions as Attachment "D"
- 1.6. One-design divisions shall sail according to their class rules.

2. NOTICES TO COMPETITORS

Notices to competitors will be posted on the Official Notice Board located in the NYC's clubhouse lower level, next to the Regatta Race Office.

3. CHANGES TO SAILING INSTRUCTIONS

Any change to the sailing instructions will be posted before 0830 hours on the day it will take effect, except that any change to the schedule of races will be posted by 2000 hours on the day before it will take effect.

4. SIGNALS MADE ASHORE

- 4.1. Signals made ashore will be displayed from the flagstaff adjacent to the NYC Clubhouse.
- 4.2. When flag AP is displayed ashore, '1 minute' is replaced with 'not less than 90 minutes' in the race signal AP.

5. SCHEDULE OF RACES AND REGISTRATION

- 5.1. See NoR 6.

6. DIVISION FLAGS

- 6.1. Division splits will be announced and posted during the Competitor's meeting at 0830 hours Saturday.
- 6.2. The flag flown by the Race Committee for each division's start will be the numeral pennant corresponding to the division number.
- 6.3. [NP] Each division will be assigned a coloured ribbon to be flown from the backstay or prominent location near the stern.

7. RACING AREA

- 7.1. The racing area will be in an area off Protection Island, Newcastle Island and Gabriola Island. It may also include Northumberland Channel, Maude Island, Entrance Island, Halibut Back buoy and/or Five Fingers Islets. For details see Attachment "B."
- 7.2. The signal vessel will be "Sophrosyne," a 47 ft. white sailboat, anchored near Angle Point, Newcastle Island, in the area marked "SA" (Starting Area) on Attachment "B."
- 7.3. The finish vessel will be "See Wolf," a 38 ft. white ketch, also anchored near Angle Point, Newcastle Island, in the area marked "SA" (Starting Area) on Attachment "B."

8. THE COURSES

- 8.1. All races will be listed on a committee boat signal board using the marks as detailed in Attachments "A", "B", and "C." *Please write down - or take a picture of - your course to be sailed.*
- 8.2. Courses to be sailed will be displayed on the signal board by the race committee before the warning signal.
- 8.3. The race committee will make a broadcast by VHF of the declared wind speed range for ORC courtesy scoring prior to the warning signal of applicable divisions.

9. MARKS

Descriptions of the marks used are detailed in Attachment "A."

10. AREAS THAT ARE OBSTRUCTIONS

- 10.1. No boats shall pass between Protection and Newcastle Islands while racing.
- 10.2. In all courses, unless specified in SI 8.1, Aids to Navigation shall be passed on their prescribed side according to IALA – System B.

11. THE START

- 11.1. Races will be started using RRS 26 with the warning signal made 5 minutes before the starting signal.
- 11.2. The start line will be between an **orange** shape on the signal vessel and a **yellow** inflatable buoy at the other end of the start line.
- 11.3. [NP][DP] Boats whose warning signal has not been made shall avoid the starting area during the starting sequence for other races.
- 11.4. If any part of a boat's hull is on the course side of the starting line at her starting signal and she is identified, the race committee will attempt to hail her sail number. Failure to hail her number, failure of her to hear such a hail, or the order in which boats are hailed will not be grounds for a request for redress. This changes RRS 62.1(a).
- 11.5. A boat starting later than 10 minutes after her starting signal will be scored Did Not Start without a hearing. This changes RRS A5.1 and A5.2.

12. CHANGE OF THE NEXT LEG OF THE COURSE

- 12.1. To change the next leg of the course, the race committee will lay a new mark (or move the finishing line) and remove the original mark as soon as practicable. When in a subsequent change a new mark is replaced, it will be replaced by an original mark.

13. THE FINISH

- 13.1. There is a dedicated separate finish vessel with a separate finish line for all non-Martin 242 fleets. It will be nearby the Start Area, but will not be the same as the Signal Vessel. See NoR 7.3.
- 13.2. The finish line will be between a blue shape on the dedicated separate finish vessel and an **orange** Scotchman ball at the other end.
- 13.3. The orientation of the finish vessel and the pin-end mark may be on either side of the finish line.

14. TIME LIMITS

- 14.1. Longer races will be attempted for faster divisions. Only one race per day will be run for the cruiser/racer division.
- 14.2. If there is a one design class, windward/leeward races of about 30-45 minutes will be targeted. Failure to meet the Target Time will not be grounds for redress. This changes RRS 62.1(a).

- 14.3. No races will be started after 1630 hours Saturday and 1500 hours Sunday.

15. PENALTY SYSTEM

- 15.1. The first two sentences of RRS 44.1 are changed to: “A boat may take a One-Turn Penalty when she may have broken one or more rules of RRS Part 2 or RRS 31 in an incident while *Racing*.”
- 15.2. The Scoring Penalty, RRS 44.3 will not apply.

16. HEARING REQUESTS

- 16.1. For each division, the hearing request time limit is 90 minutes after a) the last boat has finished the last race of the day or b) the race committee signals no more racing today, whichever is later. The time will be posted on the Official Notice Board.
- 16.2. Hearing request forms shall be completed online using the racingrulesofsailing.org website at: https://www.racingrulesofsailing.org/protests/new?event_id=4183
- 16.3. Questions regarding hearings may be sent to the Chief Judge at: captkeith@yahoo.ca
- 16.4. Notices of protests by the race committee or protest committee will be posted using the racingrulesofsailing.org website to inform boats under RRS 61.1(b) at the following address: https://www.racingrulesofsailing.org/protests?event_id=4183
- 16.5. Protest hearings will be held in the Race Committee Office, located downstairs at the NYC Clubhouse, as quickly as possible and in the approximate order of receipt, beginning at the time announced on the hearing notice.

17. SCORING

See NOR 9.

18. SAFETY REGULATIONS

- 18.1. See NOR 2.
- 18.2. [DP] A boat that retires from a race shall notify the race committee as soon as possible.

19. RADIO COMMUNICATION

- 19.1. See NOR 11.
- 19.2. There may be a roll call prior to the start of the first race of the day to ensure communication is possible between the Race Committee and competitors.

20. MEDIA RIGHTS

See NOR 14.

21. PRIZES

See NOR 12.

22. DISPOSAL OF TRASH

22.1. [DP] As sailors, we seek to protect and restore our oceans and coastal waters. See RRS 47. Trash shall be contained on board and disposed of appropriately when back ashore. All garbage and recycling shall be deposited in the NYC club facilities provided.

23. RISK STATEMENT

23.1. RRS 3 states: 'The responsibility for a boat's decision to participate in a race or to continue to race is hers alone.' By participating in this event each competitor agrees and acknowledges that sailing is a potentially dangerous activity with inherent risks. These risks include strong winds and rough seas, sudden changes in weather, failure of equipment, boat handling errors, poor seamanship by other boats, loss of balance on an unstable platform and fatigue resulting in increased risk of injury. **Inherent in the sport of sailing is the risk of permanent, catastrophic injury or death by drowning, trauma, hypothermia or other causes.**

24. INSURANCE

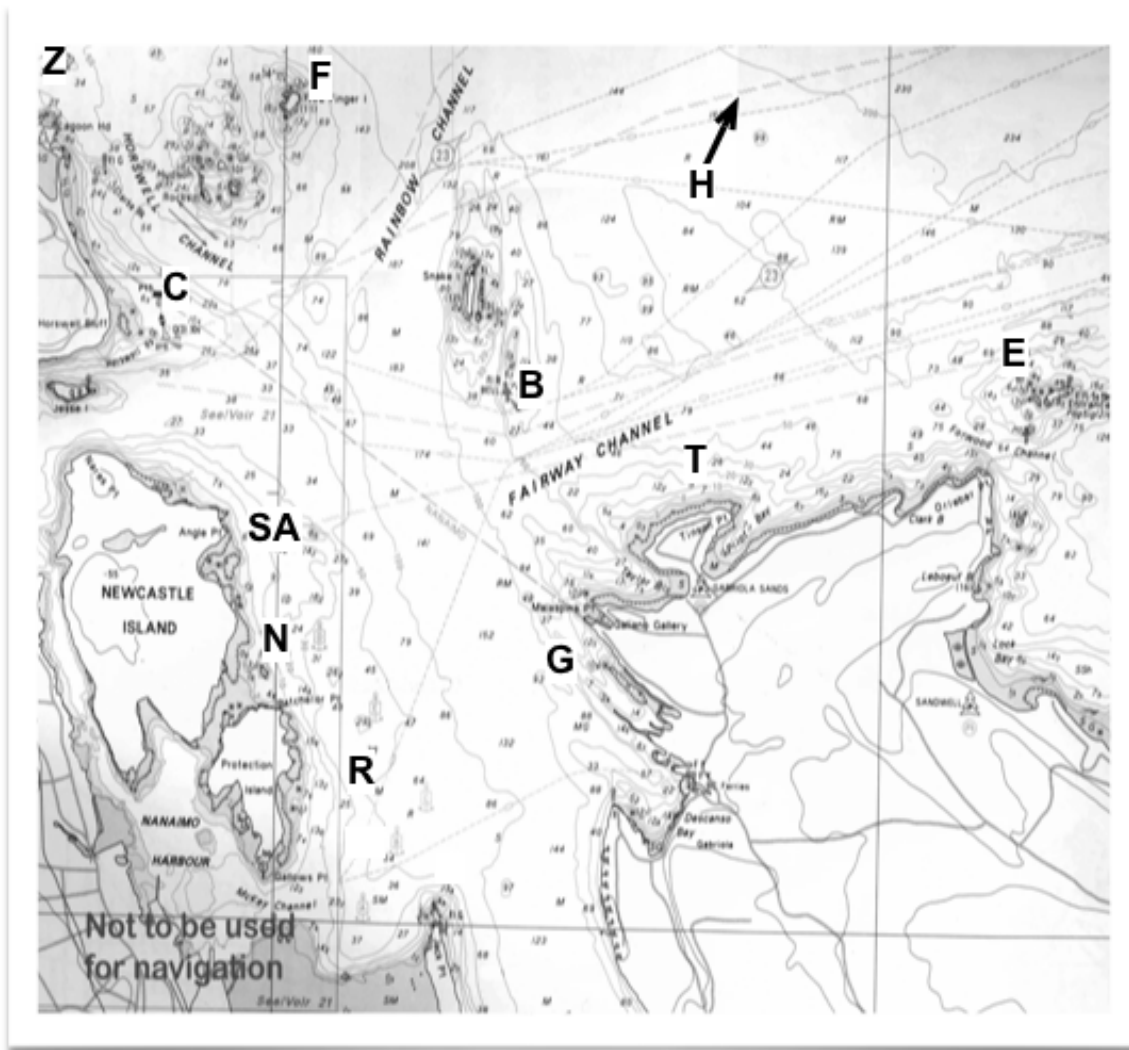
See NOR 15.

ATTACHMENT A MARKS OF THE COURSE

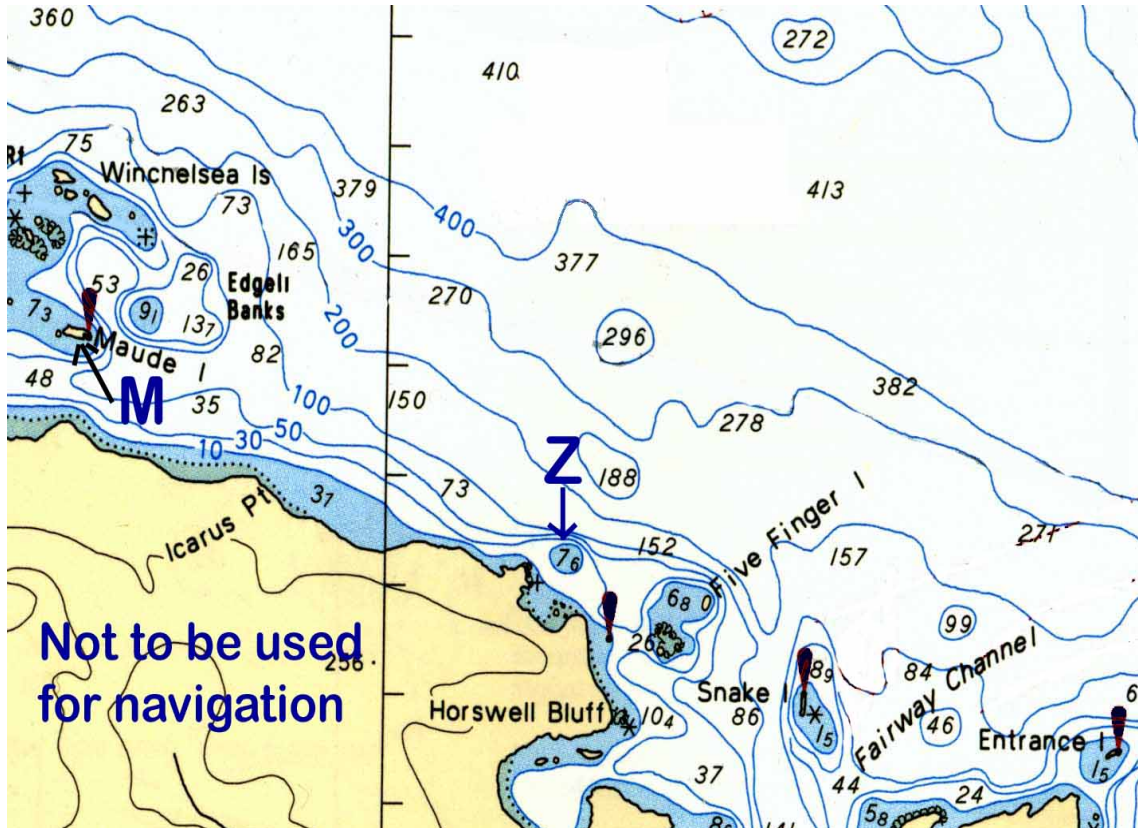
Warning: Yachts are advised that shallow water may exist in areas surrounding marks and the use of navigational charts and depth sounders is recommended. In addition, be advised that Military Activity Area Whisky Golf located north of Five Finger Islets may be active on the day of the race in which case yachts are required to keep well clear. Marks are as follows – approximate locations are on the diagram included in these instructions.

Designatio	Name
SA	The Starting Area, set off Angle Point on Newcastle Island (the so-called “Grassy Knoll”)
B	Snake Island Bell Buoy marked P2
C	Green can marked P15
E	Entrance Island
F	Five Finger Islet
G	Inflatable Mark set to the southwest of Malaspina Point on Gabriola Island.
H	Halibut Bank Buoy at approximately: N49 20.4 W123 43.7
L	Leeward Mark – Inflatable Mark set to leeward of the starting line, the description of which will be provided by the RC via VHF prior to the start.
M	Maude Island <i>(Yachts are cautioned to keep well clear of a drying reef offshore west of Maude Island)</i>
N	Inflatable Mark set north of Power Squadron Reef, approximately half way to Angle Point
R	Inflatable Mark located east of Protection Island
T	Inflatable Mark set to the north of Tinson Point on Gabriola Island
W	Windward Mark – Inflatable Mark set to weather of the starting line, the description of which will be provided by the RC via VHF prior to the start.
Z	Inflatable Mark set in the vicinity of Neck Point

**SI ATTACHMENT B
RACING AREAS (large scale detail)**



SI ATTACHMENT B (Continued)
RACING AREAS (small scale showing Maude Island)



SI ATTACHMENT C COURSE BOARD DESCRIPTIONS

The course board will be placed on the stern of the committee boat and indicates the Marks in the order they are to be rounded, and the side (Port or Starboard) the Marks are to be left when rounding. For example:

1 st Mark	2 nd Mark	3 rd Mark	4 th Mark etc.	S or P (indicates Marks are to be left all to Starboard or all to Port)
----------------------	----------------------	----------------------	---------------------------	-----------------------------------------------------------------------------------

If the rounding side is not the same for all Marks of the course, the S or P indicator defines the side for the Marks listed to the left of the S or P indicator. Marks following this S or P indicator will be rounded on the opposite side, and this will be indicated by another S or P indicator etc. For example:

1 st Mark	2 nd Mark	S or P (indicates Marks 1&2 are both to be left to Starboard or both left to Port)	3 rd Mark	4 th Mark	S or P (indicates Marks 3&4 are both to be left to Starboard or both left to Port)
----------------------	----------------------	----------------------------------------------------------------------------------------------	----------------------	----------------------	----------------------------------------------------------------------------------------------

A course board showing the following indicates:

Start, Five Finger Islet and Entrance Island left to Starboard, then Five Finger Islet left to Port, then Finish.

F	E	S	F	P
---	---	---	---	---

SI ATTACHMENT D

Sail Canada Prescriptions 2021–2024

Effective 1 January 2021

Rule 46 – Person in Charge

Sail Canada prescribes that the designated person in charge, if resident in Canada, shall be a member of Sail Canada through either a club affiliated to Sail Canada or such person's Provincial Sailing Association.

Rule 61.2 – Protest Contents

Sail Canada prescribes that no fee shall be charged for delivering a protest or a request for redress.

Rule 67 – Damages

Sail Canada prescribes that a boat that has been found by a protest committee to have broken a rule and caused damage shall be considered at fault for the purposes of rule 67.

Rule 70.5(a) – Appeals and Requests to a National Authority

Sail Canada so prescribes.

Rule 86.3 – Changes to the Racing Rules

Sail Canada so prescribes.

Rule 88.2 – Changes to Prescriptions

Sail Canada prescribes that its prescriptions to rules 61.2 and 67 may not be changed or deleted. The notice of race or sailing instructions may change or delete any other Sail Canada prescription only if a no-appeal jury or an international jury has been appointed for the event.

Rule 91(b) – Protest Committee

Sail Canada prescribes that, before making a request to World Sailing for an international jury formed under rule N1.7 comprised of only three members, written approval be obtained from Sail Canada.

Appendix B, Rule B5 — Changes to the Rules of Part 5

70.5(a) – Appeals and Requests to a National Authority

Sail Canada so prescribes.

Appendix E, Rule E8 – Changes to Appendix G, Identification on Sails

Sail Canada prescribes that this rule applies to Canadian boats in all classes.

Appendix R – Procedures for Appeals and Requests

Submit appeals and requests to Sail Canada at: appeals@sailing.ca

Sail Canada prescribes that it may delegate the responsibilities and actions of the national authority in rules 71.2, 71.3, R3, R4 and R5 to a provincial appeals committee.

Decisions of a provincial appeals committee may be further appealed to Sail Canada. If a decision is further appealed, the time limit in each of rules R2.1 and R4.4 is changed to seven days and the words “protest committee” are changed to “provincial appeals committee” wherever they are found. In rule R4.4 the protest committee may also comment on the further appeal and receive copies.